



BELIZE ELECTRICITY LIMITED

2¹/₂ Miles Philip Goldson Highway | P.O. Box 327 | Belize City, Belize
Corporate: +501.227.0954 | Customer Care: 0.800.235.2273 | Fax: +501.223.0891

November 11, 2025

BEL Restores Power Supply to Belize City Following Transmission Line Failure at Mile 8 on the George Price Highway

Belize Electricity Limited (BEL) informs our Customers that power has been restored to our Customers in Belize City following a major outage that occurred at 12:30 a.m., shortly after midnight on Tuesday, November 11, 2025. The outage was caused by a transmission line fault outside the West Lake Substation at Mile 8 on the George Price Highway.

Following the incident, our BEL teams immediately began efforts to restore power as safely and efficiently as possible. At approximately 2:30 a.m., supply was restored to portions of the city, including Belama, Bella Vista, and Buttonwood Bay, through the West Lake Substation transformer that normally supplies Ladyville.

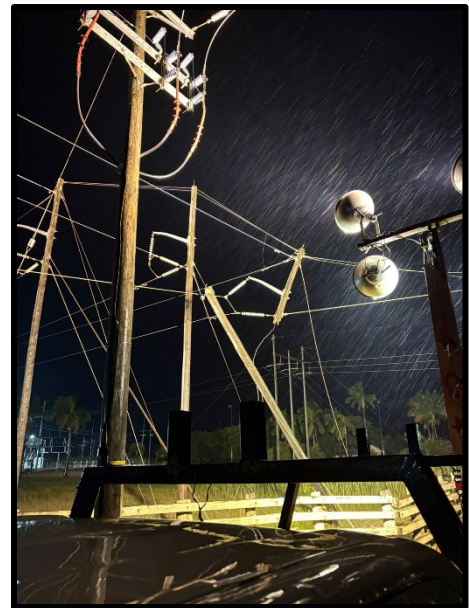
Power was fully restored to the remaining areas in Belize City at 12:11 p.m. this afternoon.

We apologize for the inconvenience caused by this unplanned event and thank our Customers for your patience and understanding.

We thank our staff and contractors who responded swiftly during the early hours of the morning to begin restoration efforts.

BEL remains committed to delivering safe, reliable, and sustainable energy to you.

Download our BEL 24-7 App for details and direct updates.



-End-